

 kelvin<sup>®</sup>  
Kitchen Care



---

# Welcome

Thank you for trusting Kelvin. For over 30 years, we have created beautiful kitchens, bedrooms and bathrooms for homes across Britain.

These simple operating and maintenance instructions will ensure prolonged reliability from your Kelvin products.

## Contents

Door Adjustments	2
Drawer Box Adjustments	3
Cleaning Guide	4
Kelvin at Home	5

# Hinge & Door Adjustments

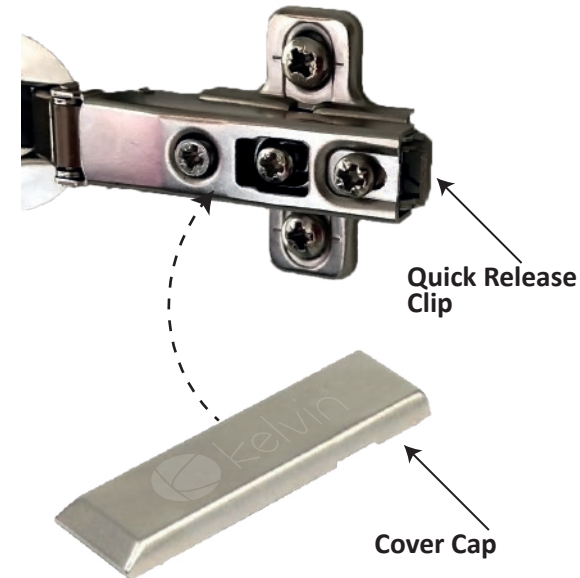
## Hinge Information

### Quick Release

Some hinges have a quick release clip at the back of the hinge inside the cabinet. When pressed, the hinge body can pop-off the frame fixed to the cabinet. The hinge can be put back in place by clipping the hinge body onto the frame (press the body onto the frame to ensure it is secure).

### Cover Cap

The adjusting screws can, on occasion, have a cover cap over the length of the hinge. This can easily be removed to expose the screw heads.



## Door Positions

### Vertical

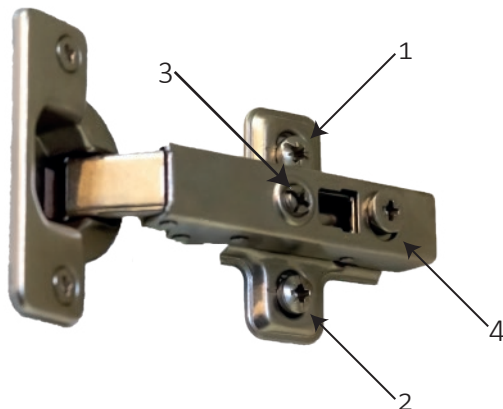
To adjust the height of the door, slowly loosen screws 1 & 2 of the top and bottom hinges until the door is at the desired height. Remember to tighten the screws when you find the desired position.

### Horizontal

If the door is not sitting square to the opening or overlapping other doors when closed, adjust screw 3 to move the door left to right.

### Flush to Cabinetry

To increase or decrease the gap of between the door and cabinet, adjust screw 4.

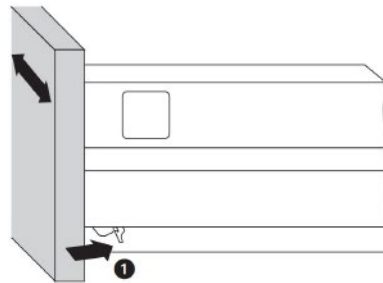


# Drawer Box Adjustments

## Positioning

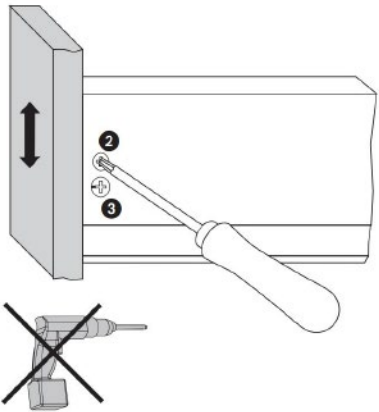
### Side-to-side adjustments

Press the clamping lever (1) lightly to the back and move over the ribbing. Adjustment range is  $\pm 1,5$  mm. Release the clamping lever.



### Height adjustments

Lightly loosen screw (2) and adjust to desired position by means of excenter screw (3). Adjustment range is  $\pm 2$  mm. Tighten screw (2).



## Removal and Replace



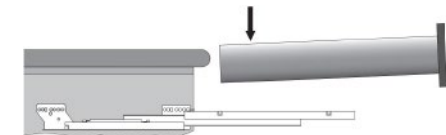
### Removal

Pull out drawer completely and lift.

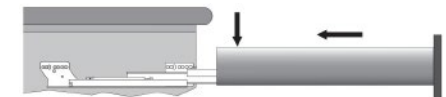


### Replace

Pull out & extend drawer runner.



Set drawer on the runner.



Push in until drawer locks in place.

# Cleaning Guide

## Light, Fresh Soiling

Clean with a paper towel, a soft clean cloth (dry/damp) or a sponge. If using a damp cloth, dry the surface with an absorbent paper towel or microfibre cloth.

Streaks often form when the surface is cleaned with organic solvents, together with cold water and old cloths. To ensure no streaks occur when cleaning, we recommend wiping the surface down with warm water and then drying it using normal paper towels or microfibre cloths.

## Normal Soiling - Extended Contact Time

Clean with warm water, a clean rag or microfibre cloth, a soft sponge or soft brush. Use normal domestic cleaners or soaps that have no abrasive ingredients. Then wipe with fresh water, removing all traces of the cleaning agent, to prevent streaks forming. Dry the surface with a clean, absorbent cloth or paper towels.

The following cleaning agents should not be used under any circumstances:

- Scouring and abrasive agents (abrasive powders, scouring pads, steel wool).
- Polish, washing powder, furniture cleaner, bleach.
- Detergents with strong acids and acidic salts.
- Steam cleaning equipment.

## Care and Usage for Matt Surfaces

Surfaces with a matt finish have a very natural look and feel. The oiled or matt lacquered type finish thus retains the characteristics of the original, solid wood surface. Like high-gloss or solid wood surfaces, a few points need to be considered when using and caring for matt surfaces.

As with other synthetic surfaces, normal soiling is easy to remove without any problems. What is important is that the surfaces are only cleaned with a soft, moist cloth. Under no circumstances must abrasive agents/powders, steel wool, polish, washing powder, furniture cleaner, bleach, acidic cleaning agents or steam cleaning equipment be used.

The reason for these precautions is that abrasive cleaners, rough cloths or scouring pads will cause bright patches or highlights in the surface if applied too vigorously, which damage the surface and are impossible to remove. Remnants of fat should also be removed as quickly as possible (within 48 hours) as the surface may be damaged if they are allowed to remain in contact with it for too long.

All glass & mirror used in our products is manufactured to BS EN 12600:2002 2B2; 4mm internal safety-backed glass suitable for internal use in buildings and construction works.



[www.kelvinathome.co.uk](http://www.kelvinathome.co.uk)



## Kelvin at Home

Our retail department has its own dedicated website for spares, additions and new products for you to purchase at the click of a button.

If you don't see what you are looking for, contact us using the online form and one of our team will get back to you.



2 Hunt Hill  
Cumbernauld  
G68 9LF

[info@kelvinkbb.com](mailto:info@kelvinkbb.com)